



Celebrity
DIRECT
Entertainment
www.CelebrityDirect.net

PO Box 494314
Port Charlotte, FL 33949
941.624.2254 * info@celebritydirect.net

JIMI JAMISON
FORMER LEAD SINGER OF SURVIVOR

ROCKERS OF RADIO

FEATURING FRAN COSMO & JIMI JAMISON

FORMER SINGERS OF BOSTON & SURVIVOR

"More Than A Feeling"
"Foreplay / Long Time"
"Peace Of Mind"
"Walk On"
"Livin' For You"
"Rock & Roll Band"

"Eye Of The Tiger"
"I Can't Hold Back"
"High On You"
"The Search Is Over"
"Burning Heart"
"Is This Love"

JIMI JAMISON
FORMER LEAD SINGER OF SURVIVOR
1984-89 / 2000-06

Legends

FRAN COSMO
FORMER LEAD SINGER OF BOSTON
1993-2006

ALSO FEATURING ANTHONY COSMO
FORMER BOSTON SONG WRITER & GUITAR PLAYER
1997-2006

3 HOURS OF NON-STOP HITS, FOR ONE AFFORDABLE PRICE!

JOIN US FOR THE MOST INCREDIBLE CLASSIC ROCK IN THE WORLD!

FOR BOOKING INFORMATION, PLEASE CONTACT:

"Signature Series"

Celebrity DIRECT Entertainment

PO Box 494314
Port Charlotte, FL 33949
941.624.2254
info@celebritydirect.net
www.CelebrityDirect.net

JIMI JAMISON
FORMER LEAD SINGER
OF SURVIVOR



CELEBRITY DIRECT ENTERTAINMENT
Cord G. Coslor - agent
PO BOX 494314
Port Charlotte, FL 33949
941.624.2254 * cord@celebritydirect.net
www.Celebritydirect.net

JIMI JAMISON BIOGRAPHY

Jimi Jamison best known as the lead singer for the band Survivor from 1984-1989 and again from 2000-2006.

Born in rural Mississippi, Jamison moved with his mother to Memphis, Tennessee, at a very young age, and he considers himself a Memphis native. In addition to honing his vocal abilities, Jamison dabbled in guitar growing up. By middle school, he was playing in a band. He would later sing for the bands Target and Cobra and provided background vocals for other bands including ZZ Top. After the demise of Cobra in 1983/84, he was invited to audition for Survivor. Although he was initially not adamant about fronting what he considered more of a "pop rock" band, which would contrast significantly with the heavy metal stylings of Cobra to which he had become accustomed, Jamison ultimately got the job and became Survivor's new frontman, and is today the most recognizable and best known of the group.

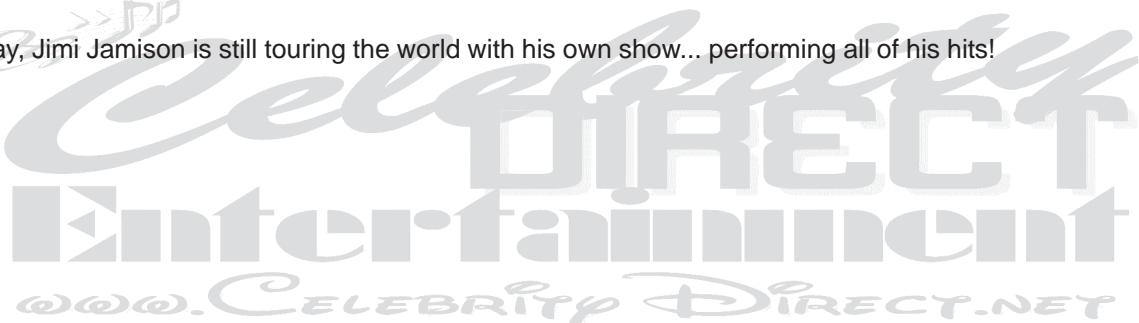
Among his best known performances are "Burning Heart", from the Rocky IV movie with Sylvester Stallone, which hit #2 on the Billboard Hot 100, "High On You" (#8 US), and "The Search Is Over" (#4 US). Jamison also co-wrote and sang "I'm Always Here," the theme from the hit TV show Baywatch.

In 1989, Jamison was briefly considered as the lead vocal replacement for Deep Purple, who had just fired Ian Gillan. Said Purple organist Jon Lord of Jamison in a 1993 interview, "He was an enormous Deep Purple fan and he would happily have taken over the job. But at the time he was afraid of his managers. They didn't want him to leave [Survivor] and he didn't dare to get into a fight with them." Deep Purple instead hired former Rainbow vocalist Joe Lynn Turner.

Jamison would later reunite with Survivor in 2000, and he ended up remaining with the band up through the release of their new album in 2006. In 2005, Jamison was featured with the band in the Emmy-nominated Starbucks commercial which parodied Survivor's "Eye of the Tiger." Also in 2005, Jamison performed a duet on "It Takes Two" with teen singer Whitney Wolanin.

In 2008 Jamison released a new CD in Europe Crossroads Moment, which was also released in the United States in 2009.

Today, Jimi Jamison is still touring the world with his own show... performing all of his hits!



Celebrity
DIRECT
Entertainment
www.CELEBRITY DIRECT.NET

JIMI JAMISON
FORMER LEAD SINGER
OF SURVIVOR



CELEBRITY DIRECT ENTERTAINMENT
Cord G. Coslor - agent
PO BOX 494314
Port Charlotte, FL 33949
941.624.2254 * cord@celebritydirect.net
www.Celebritydirect.net

JIMI JAMISON DISCOGRAPHY

TARGET.....Target 1976
TARGET.....Captured 1977
COBRA.....First Strike 1983
SURVIVOR..Vital Signs 1984
When Seconds Count 1976

As on previous albums, Survivor splits things between melodic pop rock and power ballads..."Keep It Right Here", "Backstreet Love Affair", and the title track being the other standouts. After original singer Dave Bicklet ("Eye of the Tiger" Fame), left Survivor in 1983, the group picked up where they left off with newcomer Jimi Jamison on vocals, churning out even more hits – notable another ROCKY related mega-hit with "Burning Heart". 1986's "WHEN SECONDS COUNT", shows the band following it's previous pop rock formula. It scored another TOP 10 hit with "Is This Love".

SURVIVOR...The Best Collection 1986
SURVIVOR...When Seconds Count 1986
SURVIVOR...Too Hot To Sleep 1988
Recorded at Right Track Studios, New York And Royal Recorders, Lake Geneva, Wisconsin.
JIMI JAMISON...Rock Hard 1991
JIMI JAMISON....When Love Comes Down 1991
SURVIVOR...Greatest Hits 1993
SURVIVOR...Prime Cuts 1998
JIMI JAMISON....Empires 1999
SURVIVOR...Special Selections 2000
SURVIVOR...Ultimate Survivor 2004

With Whitney Wolanin...Funkology XII 2005 – Jimi Jamison. Track Listing of songs: Good; Super Star; Wake Up Everybod; It Takes Two; Heatwave; Too Many Fish in the Sea; This Old Heart of Mind; Quicksand; Young and In Love; Honey Chile; Whitney's Monkey; Head to Love; Brokenhearted.

SURVIVOR...Best of Survivor 2006
SURVIVOR...Reach 2006
JIMI JAMISON...Crossroads Moment 2008. Frontiers Records released in November 2008....Released In The U.S. April 8, 2009

SOUND TRACKS:

Karate Kid.....1985
ROCKY IV.....1992
BAYWATCH...1994
40 YEAR OLD VIRGIN...2005

Celebrity
DIRECT
entertainment
CELEBRITY DIRECT.NET

JIMI JAMISON
FORMER LEAD SINGER
OF SURVIVOR



CELEBRITY DIRECT ENTERTAINMENT

Cord G. Coslor - agent

PO BOX 494314

Port Charlotte, FL 33949

941.624.2254 * cord@celebritydirect.net

www.Celebritydirect.net

**JUST SOME OF THE PLACES JIMI HAS
PERFORMED AT, AND A FEW OF THE
PEOPLE HE'S PERFORMED WITH:**

SOME ARTISTS JIMI HAS PERFORMED WITH:

Joe Lynn Turner
Bobby Kimball
Mickey Thomas
Mike Reno
Orleans
Jeff Scott Soto
Alex Lighterwood
Jim Peterik
Don Barnes
Kelley Keagy
ZZ Top
Pat Travers
Carl Perkins
Felix Cavaliere
Vince Gill
Peter Rivera
Brian Howe
Kevin Chalfant
John Cafferty
David Pack
Fergie Fredricksen
Jack Blades
Joe Walsh
Gunnar And Matthew Nelson
Michael McDonald
Dolly Parton
Brooks And Dunn
Frank Stallone And The Heartbreakers
Jani Lane
Janet Gardner
Joe Bouchard
Mark Farner
Gary Wright
Styx
Bad Company
Kiss
Peter Frampton
Roy Orbison
Mitch Ryder And The Detroit Wheels
The Doobie Brothers

A FEW OF THE CASINOS JIMI HAS PERFORMED AT:

Foxwoods - CT
Mohegan Sun - CT
The Cannery - Las Vegas, NV
The El Dorado - Reno, NV
Soaring Eagle - Mt. Pleasant, MI
Isle Of Capri - Biloxi, MS
Harrahs Tunica
Harrahs Tahoe

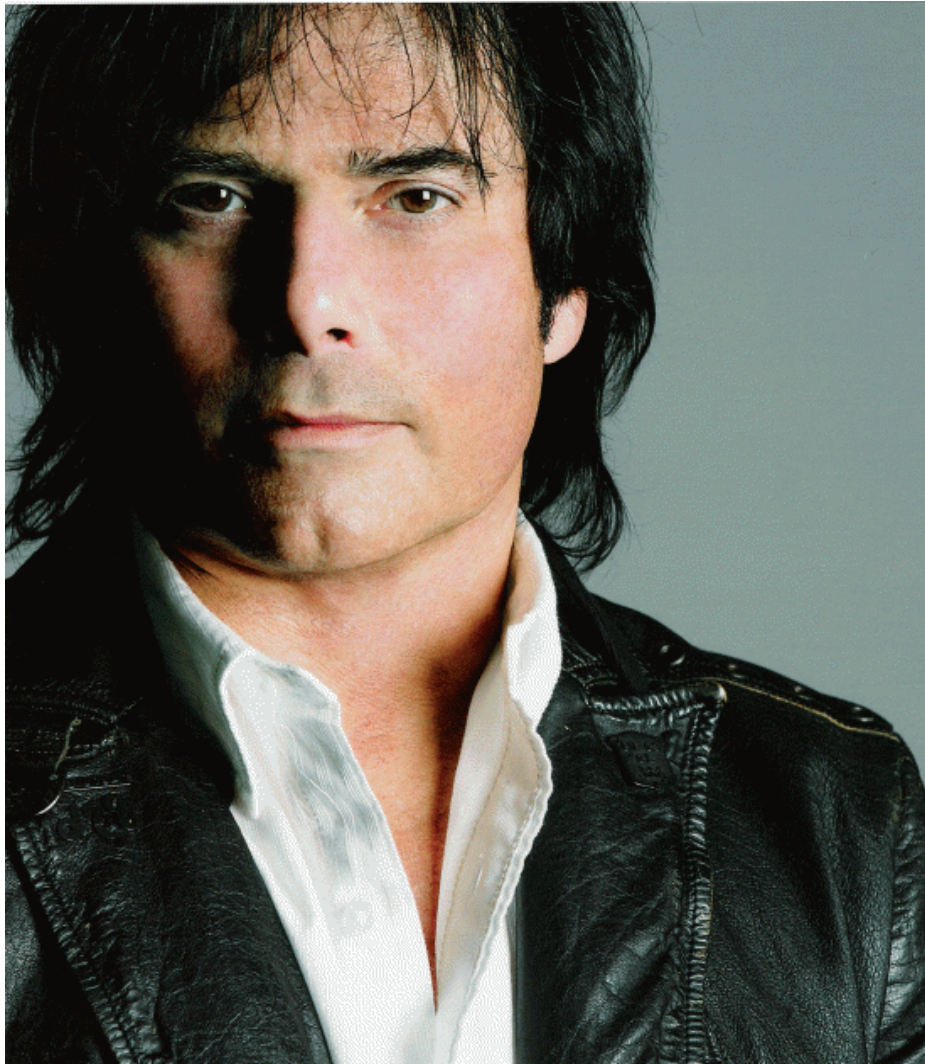
A FEW PLACES JIMI HAS PERFORMED AT:

Belgium
Germany
Canada
Guam
Brazil
Japan
Chile
Holland
Mexico
Trinidad
England
Greenland
China
Singapore
Phillipines
Ecuador
Portugal
Argentina
Austria
Venezuela
Columbia
Guyana
Honduras
Puerto Rico
Peru
Bolivia
Netherlands
Panama
Costa Rica
Korea
Nicaragua
Italy
Spain Wolf Den - Mohegan Sun
House Of Blues - Chicago
College Of Du Page - Glen Elyn, IL
The Trocoderas - Minneapolis, MN
The Montana - Canada
Fiddlers Green - Canada
Wildhorse Saloon - Nashville, TN
Velvet Sessions - Hard Rock Hotel
Hard Rock Live - Orlando, FL
Cerritos Center For Performing Art - California
Disneyworld - Orlando, FL
Tri-Lakes - Branson, MO
Sweet Caroline's - Winchester, VA
Waterfest - Osh Kosh, WI
Cynthia Mitchell Woods Pavillion - Houston, TX
Ridgefield Theater - Ridgefield, CT
New Bedford Police Assn - New Bedford, CT
Taste Of Madison - Madison, WI

JIMI JAMISON
FORMER LEAD SINGER
OF SURVIVOR



CELEBRITY DIRECT ENTERTAINMENT
Cord G. Coslor - agent
PO BOX 494314
Port Charlotte, FL 33949
941.624.2254 * cord@celebritydirect.net
www.Celebritydirect.net



FOR BOOKING AND BUSINESS ADMINISTRATION CONTACT:

The logo for Celebrity Direct Entertainment features the word "Celebrity" in a large, stylized, grey font with a musical note icon above the 'y'. Below it, "DIRECT" is written in a bold, blue, sans-serif font. Underneath "DIRECT", the word "Entertainment" is written in a smaller, black, sans-serif font. Below "Entertainment", the text "ENTERTAINMENT BOOKING, MANAGEMENT & PROMOTIONS!" is written in a small, blue, sans-serif font. Below that, the website "WWW.CELEBRITYDIRECT.NET" is written in a bold, red, sans-serif font. At the bottom of the logo, the text "CORD G. COSLOR, OWNER" is written in a small, black, sans-serif font, followed by "PORT CHARLOTTE, FLORIDA" and "941.624.2254" in a small, black, sans-serif font.

PO Box 494314 - Port Charlotte, FL 33949
941.624.2254 * info@celebritydirect.net
www.CelebrityDirect.net

JIMI JAMISON
FORMER LEAD SINGER
OF SURVIVOR



CELEBRITY DIRECT ENTERTAINMENT
Cord G. Coslor - agent
PO BOX 494314
Port Charlotte, FL 33949
941.624.2254 * cord@celebritydirect.net
www.Celebritydirect.net

JIMI JAMISON REVIEWS

**** "Wow, the show was amazing. Great performance. Letting the workday pass by listening to the "Too Hot to Sleep" album...reminding myself of what a gem that song "Desperate Dreams" is!"

**** "I've had the opportunity to see Jimi perform several times over the past 22 years and I'm always amazed at how his voice continues to reach new heights. I personally think he is the greatest singer of yesterday and today. I was fortunate enough to see him perform this past Saturday at Mohegan Sun and was blown away by his performance...one of his best for sure."

**** Jimi Jamison and his band played in the Wolf Den at Mohegan Sun Hotel/Casino on December 5, 2010. The show was amazing... comments received so far, about this incredible show!

**** "So for fans of AOL, this is a "MUST BUY", bordering on "CLASSIC" status. Definitely among the top 3 cd's I've heard this year.... and maybe number 1!"

**** "In a word - PHENOMENAL"

**** "This is a masterpiece!! THE BEST CD OF 2008"

**** "One of the greatest voices of AOR melodic rock of all the times, a perfect CD... pure survivor!!!!!"

**** "This is a masterpiece, unless you are deaf....AMAZING album."

**** "That being said, this is the best AOR release in the last decade or so."


WWW.CELEBRITYDIRECT.NET

JIMI JAMISON
FORMER LEAD SINGER
OF SURVIVOR



CELEBRITY DIRECT ENTERTAINMENT
Cord G. Coslor - agent
PO BOX 494314
Port Charlotte, FL 33949
941.624.2254 * cord@celebritydirect.net
www.Celebritydirect.net

JIMI JAMISON SOUND CHECK

Main Vocal Monitor Mix

Main Vocal (Up) Punchy with some highs
Small Mix of all other vocals.
Keyboard
Guitar


Drum Monitor Mix

Kick
Snare
Hat
Rack 1
Floor1
Floor 2
Some Over head
All Vocals + (Main Vocal Up overall)
Guitar
Bass
Keys

Bass Monitor

All Vocals
Bass
Keys
Kick
Snare
Hat

Guitar Monitor

Vocals
Kick
Snare
Hi Hat 
Guitar

Keyboard Monitor

Keys
Vocals (Main up over all)
Kick
Snare


www.CELEBRITY DIRECT.NET

JIMI JAMISON
FORMER LEAD SINGER
OF SURVIVOR



CELEBRITY DIRECT ENTERTAINMENT
Cord G. Coslor - agent
PO BOX 494314
Port Charlotte, FL 33949
941.624.2254 * cord@celebritydirect.net
www.Celebritydirect.net

JIMI JAMISON BACKLINE

1. Hal Butler – Keyboards

- 1- Ensoniq SD1
- 1- Alesis QS8 (if those are not available 1 – Triton extreme)
- 1- Ultimate Support Heavy Duty Single base two tier Keyboard stand
- 1- Heavy Duty Drum Throne

2. Hal McCormack – Guitar

- 2- JCM 900 half stack's with slanted cabinets
- 2- Foot switches for channel switching (A MUST)

If JCM 900s are not available, Amps must be comparable to the JCM's and MUST HAVE channel switching with two foot switches.

3. Barry Dunaway – Bass Guitar

- 1 - AMPEG SVT with 8x10 cabinet with Spare SVT Head or SWR rig that is comparable

*** NO HARKE PLEASE***



Celebrity
DIRECT
Entertainment
www.CelebrityDirect.net

JIMI JAMISON

FORMER LEAD SINGER

OF SURVIVOR



CELEBRITY DIRECT ENTERTAINMENT
Cord G. Coslor - agent
PO BOX 494314
Port Charlotte, FL 33949
941.624.2254 * cord@celebritydirect.net
www.Celebritydirect.net

Pete Mendillo Drum set backline

DRUMS

ALL DRUMS MUST BE DRUM WORKSHOP (PLEASE...NO PACIFIC)
(Drums Heads must be in new or new condition Please)

1 (one) 24"	Bass drum	w/	Clear Emperor Batter head (With Spare... A must)
2 (two) 6"x 14"	Snare drums	w/	Coated Reverse Black dot on top
1 (one) 12"	Tom	w/	Clear Emperor (Top) and Clear Ambassador (Bottom)
1 (one) 16"	Floor tom	w/	Clear Emperor (Top) and Clear Ambassador (Bottom)
1 (one) 18"	Floor tom	w/	Clear Emperor (Top) and Clear Ambassador (Bottom)

CYMBALS

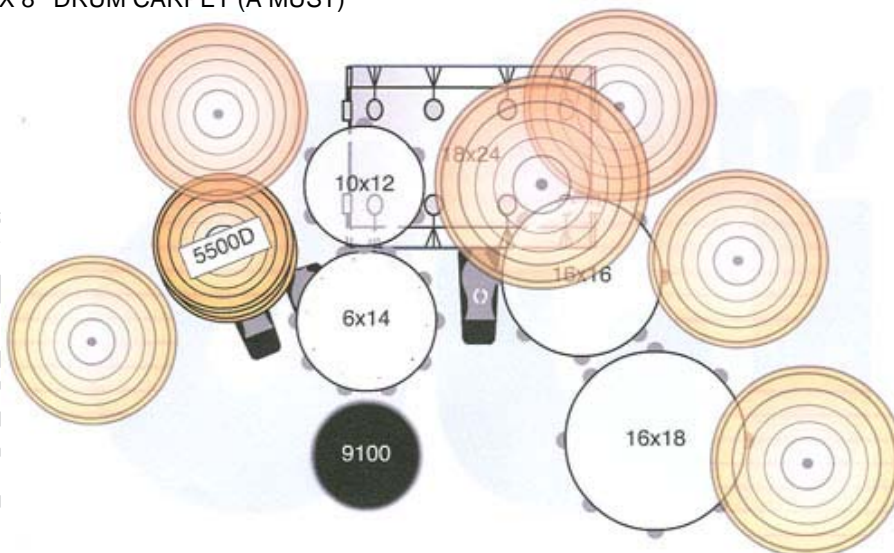
ALL CYMBALS MUST BE SABIAN AAX OR AA ONLY **NO B8 PROS**
(Cymbals to be in Great Shape Please)

1 Pr/ 15"	Regular Hi Hats
1 21"	Rock Ride
1 16"	Med Crash
1 18"	Med Crash
1 18"	Med Thin Crash
1 19"	Med Crash
1 19"	Med Thin Crash
1 18"	China

HARDWARE

ALL HARD WARE MUST BE DW HARDWARE (With all the Felts intact on each boom stand please)

6 DW	9000 SERIES	BOOM STANDS
2 DW	9000 SERIES	SNARE STAND
1 DW	9000 SERIES	HI HAT PEDAL
1 DW	9002 SERIES	TURBO DOUBLE BASS PEDAL
1 DW	9000 SERIES	DW THRONE
1	8' X 8'	DRUM CARPET (A MUST)



JIMI JAMISON
FORMER LEAD SINGER
OF SURVIVOR



CELEBRITY DIRECT ENTERTAINMENT

Cord G. Coslor - agent

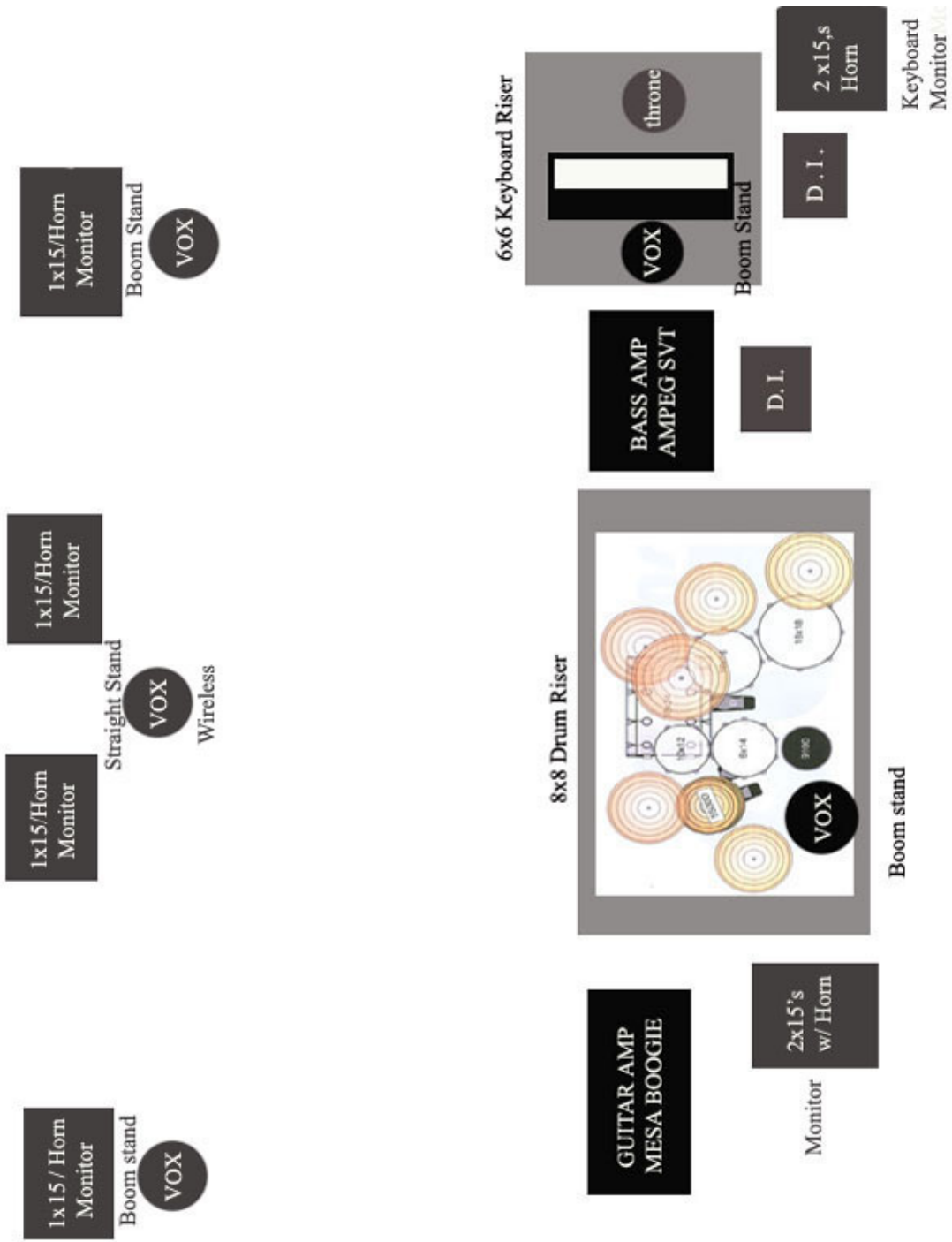
PO BOX 494314

Port Charlotte, FL 33949

941.624.2254 * cord@celebritydirect.net

www.Celebritydirect.net

JIMI JAMISON STAGE PLOT



JIMI JAMISON
FORMER LEAD SINGER
OF SURVIVOR



CELEBRITY DIRECT ENTERTAINMENT
Cord G. Coslor - agent
PO BOX 494314
Port Charlotte, FL 33949
941.624.2254 * cord@celebritydirect.net
www.Celebritydirect.net

JIMI JAMISON INPUT LIST

****Vocal's – 5 Inputs**

Main Vox

Guitar

Keys

Drums

Bass

****Drums – 9 Inputs**

Kick

Snare

Snare (Bottom)

Rack

Floor

Floor 2

Hi Hat

2 overheads

**** Guitars – 2 Inputs**

Guitar Cabinets 1

**** Bass**

1-DI 1

**** Keyboards – 4 Inputs**

2 boards (stereo)



CELEBRITY DIRECT
Entertainment
www.CelebrityDirect.net